

# RENAL CELL CARCINOMA

Resources & Tools for the Multidisciplinary Team



Association of Community Cancer Centers

This publication is a benefit of membership.



Renal cell carcinoma (RCC) is the most common type of kidney cancer, accounting for around 90% of all kidney cancers.<sup>1</sup>



Early stage renal cancers tend to have a better prognosis, while advanced (metastatic) cancers have a worse prognosis.<sup>2</sup> At diagnosis, approximately 20 percent of patients present with metastatic renal cell carcinoma (mRCC).<sup>3</sup>



Caring for patients with less common cancers, such as renal cell carcinoma, presents unique challenges for community-based cancer care providers who may be challenged to keep up with evolving treatments and the availability of clinical trials.

## PROJECT OBJECTIVES AND OVERVIEW

ACCC established the Improving Quality Care in Renal Cell Carcinoma project to offer healthcare providers information to better care for patients with renal cell carcinoma and raise awareness among healthcare providers about the challenges related to this disease. Learn more at: [acc-cancer.org/RCC](http://acc-cancer.org/RCC).

- Increase awareness about the special needs of caring for less common cancers in the community setting, including how to stay up-to-date on the latest clinical information and treatment protocols around renal cell carcinoma.
- Identify effective practices, including education materials and resources, for supporting renal cell carcinoma patients through diagnosis, treatment, and follow-up, and how to best implement these effective practices in the community setting.
- Establish Community Resource Centers (CRCs) for renal cell carcinoma in which community-based programs with expertise in meeting the unique needs of patients with RCC are available to answer questions and provide direction to other programs.

## SURVEY OVERVIEW

ACCC Center for Provider Education partnered with the Kidney Cancer Association ([www.kidneycancer.org](http://www.kidneycancer.org)) and established an expert Advisory Committee to help guide the project. With the Advisory Committee's input and oversight, ACCC developed a survey designed to:

- Assess the barriers to caring for patients with metastatic RCC
- Identify gaps in provider knowledge and resources about RCC
- Identify effective practices and components of a strong RCC cancer program.

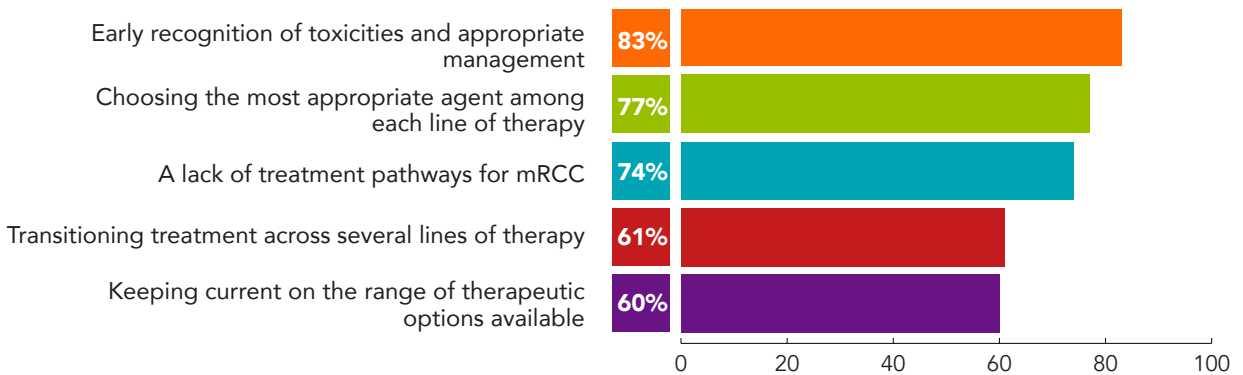
(Note: 101 responses from programs were received. This represents approximately 5 percent of ACCC member programs contacted.)

# HIGHLIGHTS OF THE ACCC 2015 RENAL CELL CARCINOMA SURVEY

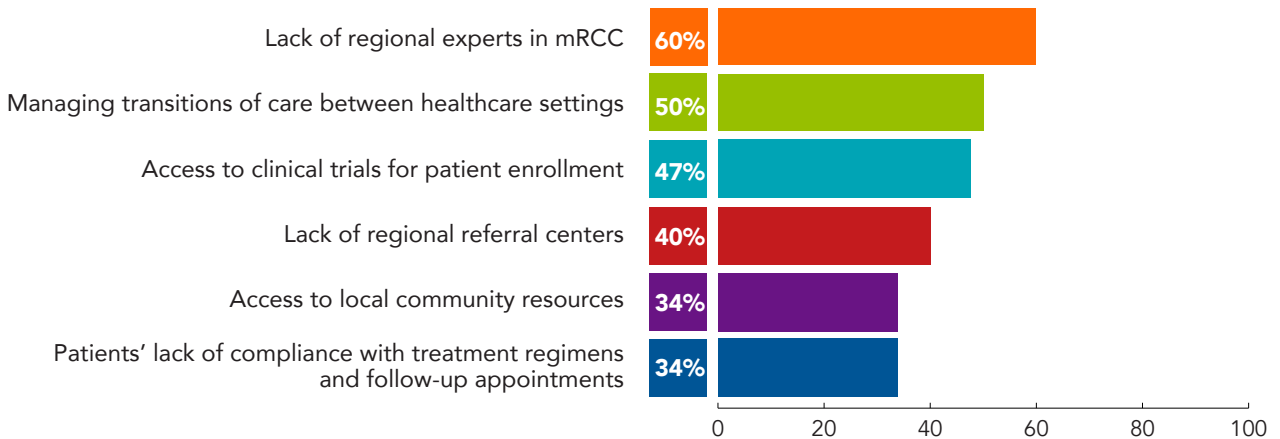
## Who Took Our Survey?



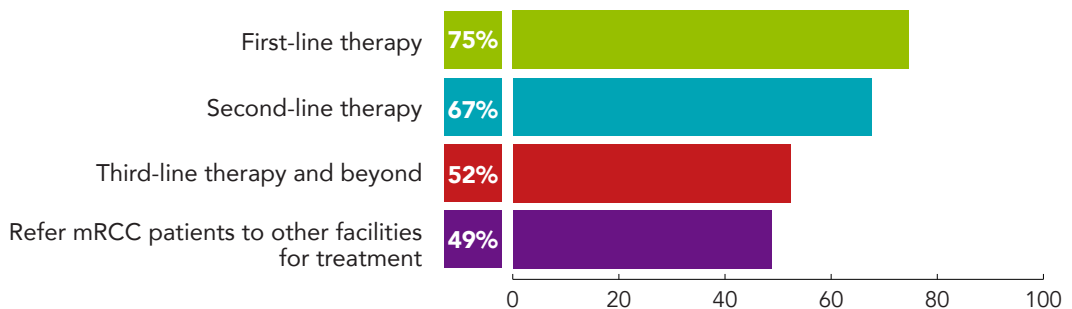
## Respondents Report These Challenges When TREATING Patients with mRCC



## Respondents Report These Challenges When SUPPORTING Patients with mRCC



## Respondents Report That They Treat Their mRCC Patient with:



# HIGHLIGHTS OF THE ACCC 2015 RENAL CELL CARCINOMA SURVEY

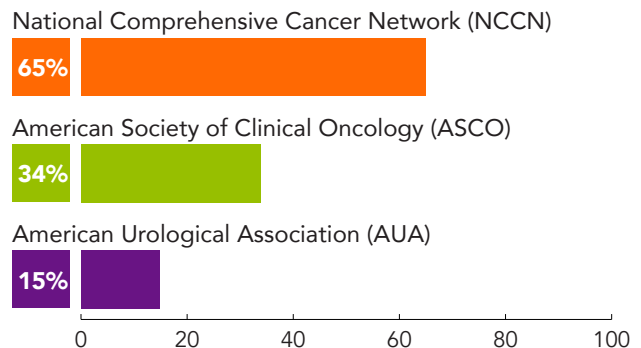
## When Selecting First-line mRCC Treatments, Respondents Rated the Following Criteria as VERY IMPORTANT

1. High efficacy in overall survival (71%)
2. Treatments which allow patients to continue their activities of daily living (68%)
3. Treatments that have high efficacy in patients with heavy tumor burden (64%)
4. Treatment with high efficacy in extending progress-free survival (PFS) (64%)

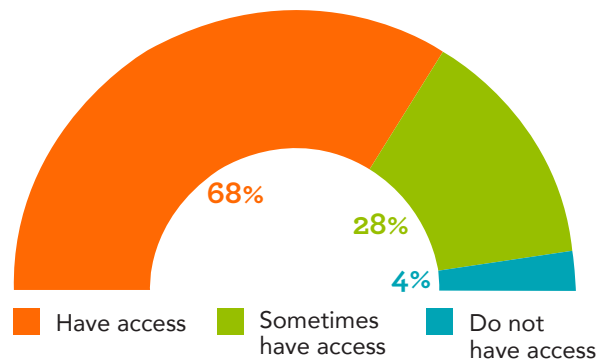
## When Selecting Second-line mRCC Treatments, Respondents Rated the Following Criteria as VERY IMPORTANT

1. Treatments which allow patients to continue their activities of daily living (73%)
2. Treatments with high efficacy in producing progression-free survival (60%)
3. Treatments with high efficacy in producing objective tumor response (60%)

## Percentage of Respondents ALWAYS USE These Treatment Guidelines for the Management of mRCC

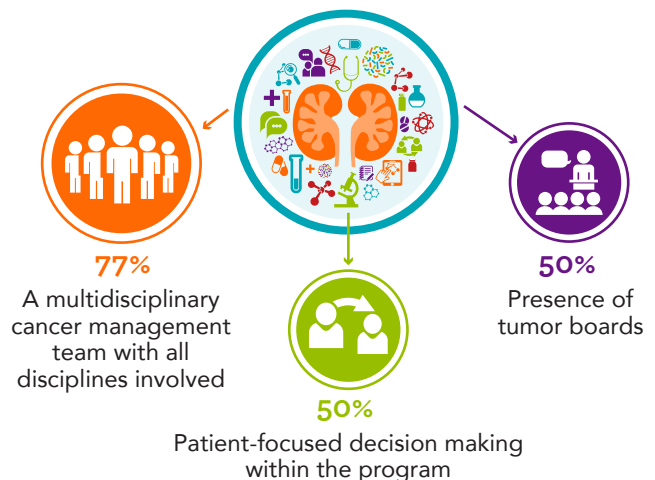


## Do Your mRCC Patients Have Access to a Financial Advocate?

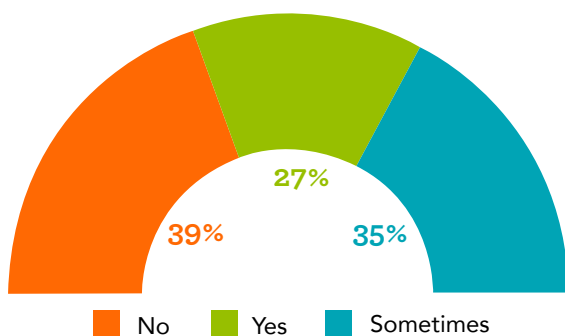


**71%** of multidisciplinary team members—including clinicians and non-clinicians are—MOSTLY to EXTREMELY CONFIDENT in discussing treatment planning for mRCC.

## Top 3 Elements Contributing to a Strong mRCC Program



## Has Your Program Seen an Increase in Patients and/or Caregivers Wanting to Discontinue Treatment?



**When treating patients with mRCC, 31% of prescribing clinicians report that they are EXTREMELY CONFIDENT in identifying the most appropriate treatment options with first-line therapy.**

## HIGHLIGHTS OF THE ACCC 2015 RENAL CELL CARCINOMA SURVEY



### Based on PRACTICE NEEDS, Respondents Want Additional Information On...

- Advanced care planning (future healthcare decisions) **64%**
- Clinical trial options **60%**
- Treatment planning for locally advanced, unresectable disease **59%**
- Second-line treatment options for advanced mRCC **59%**
- Adherence strategies for oral medications **56%**
- Diagnosis of mRCC **55%**



### Based on SUPPORTIVE CARE NEEDS, Respondents Want Additional Information On...

- Clinical trial information **72%**
- Home and community support during treatment **68%**
- Distress screening **68%**
- Information on financial assistance and cost of care **67%**
- Transitioning patients between care settings **67%**



### Respondents Report That These Educational Resources or Tools Would Be “MOST TO EXTREMELY USEFUL” in Treating Patients with mRCC

- Financial assistance tools **(69%)**
- Patient brochures explaining RCC **(65%)**
- Anatomical pictures or interactive videos of the kidney organs to illustrate the location of the disease at diagnosis and at subsequent visits **(64%)**
- Distress screening tools **(59%)**
- Assessment and tracking tools for newly-diagnosed patients **(58%)**
- Patient decision making tools **(54%)**
- Clinical trial information and online links **(54%)**

## References

1. American Cancer Society. What is Kidney Cancer? Available online at: [www.cancer.org/cancer/kidneycancer/detailedguide/kidney-cancer-adult-what-is-kidney-cancer](http://www.cancer.org/cancer/kidneycancer/detailedguide/kidney-cancer-adult-what-is-kidney-cancer). Last accessed Aug. 26, 2015.
2. American Cancer Society. Kidney Cancer (Adult) – Renal Cell Carcinoma. Available online at: [www.cancer.org/acs/groups/cid/documents/webcontent/003107-pdf.pdf](http://www.cancer.org/acs/groups/cid/documents/webcontent/003107-pdf.pdf). Last accessed Aug. 26, 2015.
3. SEER Surveillance Epidemiology and End Results. [Seer.cancer.gov](http://Seer.cancer.gov).

The Association of Community Centers (ACCC) is the leading advocacy and education organization in multidisciplinary cancer care, with an estimated 60 percent of the nation’s cancer patients being treated by a member of ACCC. Approximately 20,000 professionals from 2,000 hospitals and practices nationwide are affiliated with ACCC. Not a member? Join today at [acc-cancer.org/membership](http://acc-cancer.org/membership).

ACCC is pleased to partner on this project with the Kidney Cancer Association.



Kidney Cancer Association

Funding and support provided by Pfizer Oncology.

